



PUMPS

**BENEFICIAL FOR APPLICATIONS
WITH HIGH DISCHARGES AND LOW
HEADS**

CONCRETE VOLUTE PUMP

ANDRITZ

ENGINEERED SUCCESS

ANDRITZ Pumps for your industry



Water



Pulp and
paper



Food



Mining and
minerals



Power



Other
industries

ANDRITZ develops and manufactures high-quality custom tailored pumps for various industries. We supply pumps for different water and waste water applications. ANDRITZ pumps are operating successfully worldwide, for example in water resources management, waste water disposal, as well as large infrastructure projects for irrigation, desalination, and for drinking water and industrial water supplies.

Thousands of ANDRITZ submersible motors and pumps have been installed in mines around the world, working under severest conditions in water management and emergency drainage, including the largest submersible dewatering pumps in the world.

As plant and equipment supplier to the pulp and paper industry, ANDRITZ provides a complete pump program. Our product portfolio comprises medium-consistency pumps with an innovative fiber separation system, for example, as well as headbox pumps with efficiencies of over 90% and particularly low pulsation.

We also supply high-performance and reliable pumps for food applications such as proteins, dairy products, or beverages as well as a complete pump program for the entire sugar and starch industry. To round off the portfolio, ANDRITZ small hydropower plants and pumps used as turbines suitable for the private as well as the municipal sectors, and for industrial and commercial facilities ensure an economic and ecological independent power generation.

Customized premium pump technology

For over 165 years, ANDRITZ has been a byword for designing and manufacturing customized pump solutions at the highest level. Our engineered pumps are operating in various industrial applications successfully all over the world. They offer robustness and wear resistance, and fulfill highest customer expectations in terms of efficiency, life cycle, maintenance friendliness, and economic efficiency. The high standard of ANDRITZ centrifugal pumps is based on decades of experience in designing hydraulic machines and extensive know-how. In the interests of our customers, we set no limits on size and flow rate in the development and manufacture of customer-specific pumps. Experienced experts assist our customers with planning, development, installation, start-up and after-sales service. Engineering, design, material selection and manufacturing all run according to defined standards. The processes are transparent and can be adapted to individual needs. Our goals at ANDRITZ are to provide first-class products and service to secure sustained customer satisfaction.

ANDRITZ CONCRETE VOLUTE PUMPS

ANDRITZ has been installing Kaplan turbine units successfully all around the world since 1926. The design principle of Kaplan turbines with concrete casings is the same as that used for concrete volute pumps. Based on its many years of experience and on the exacting demands customary in the water turbine sector, ANDRITZ has adapted its technology to concrete volute pumps and designed sophisticated concreting systems ensuring smooth execution and accurate results. From the technological and economic points of view, concrete volute pumps are the best solution when large amounts of water are to be delivered. The concrete casing has a long service life and is resistant to erosion as well as to both seawater and brackish water. Furthermore, the material costs are low.

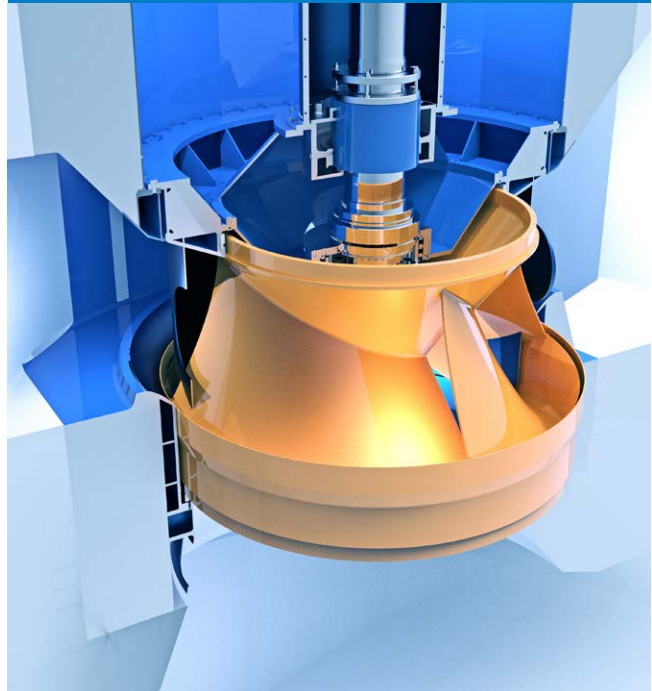
FIELDS OF APPLICATION

- Cooling water pumps for power stations
- Fresh water and seawater transport for irrigation and drainage
- Flood control
- Drinking and industrial water supplies
- Seawater intake pumps

PRODUCT FACTS*:

- Radial or semi-axial impeller
- Flow rate up to 50 m³/sec
- Head up to 40 m
- Power up to 20 MW
- Highest efficiency

*These values are guidelines and may differ depending on project requirements



Concrete volute pump

PRODUCT BENEFITS

- Individual hydraulic dimensioning and design of the volute casing for specific output characteristics
- Optimum flow achieved in the volute thanks to individual shaping
- Three construction procedures for concrete volute pumps
- IIoT ready

1 THRUST BEARING

- at pump, gearbox or motor

2 PIT LINER

3 RADIAL BEARING

4 SHAFT SEAL

5 HYDRAULICS

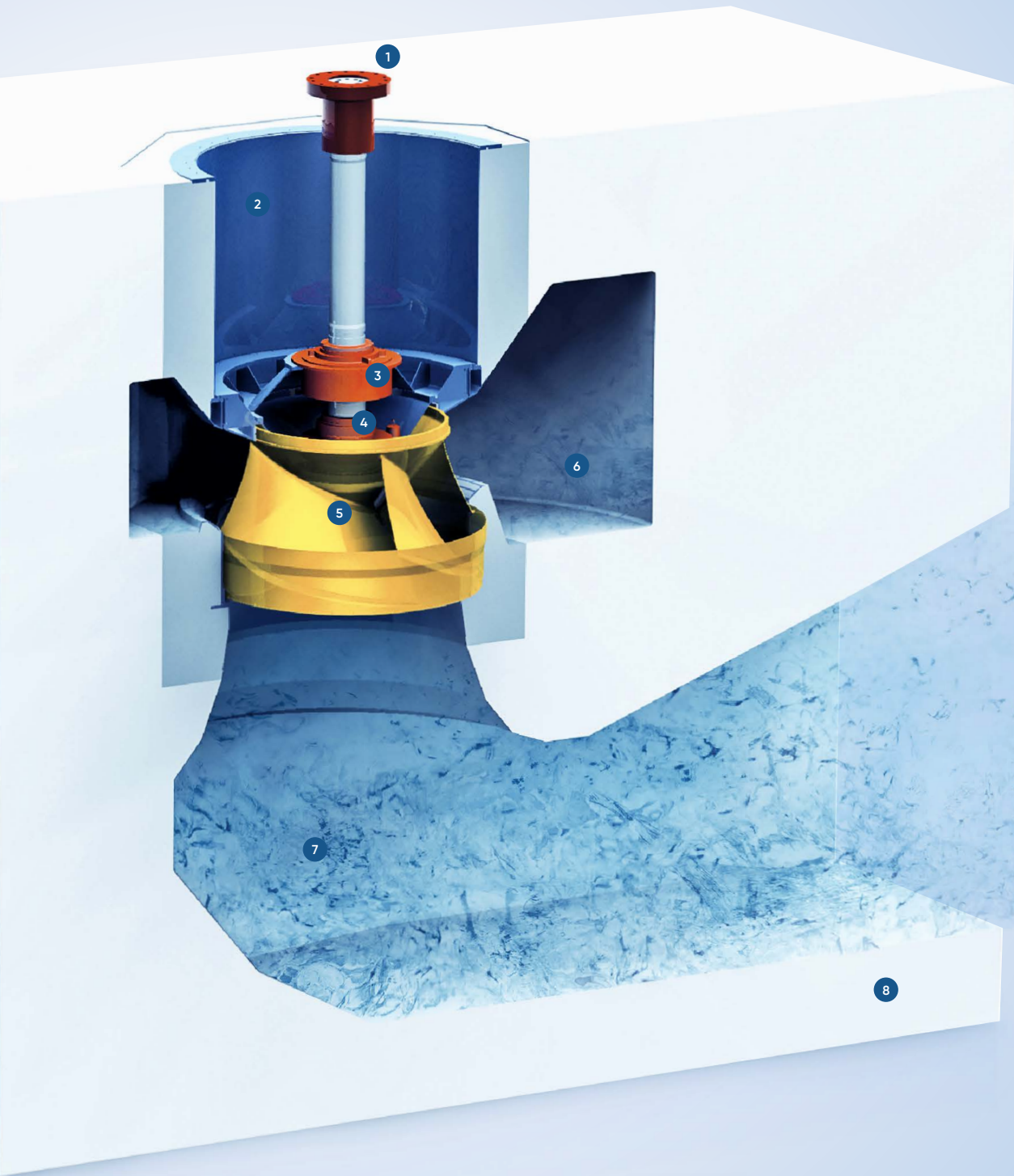
- Radial or
- Semi-axial impeller

6 CONCRETE VOLUTE

7 INLET BEND

8 CONCRETE





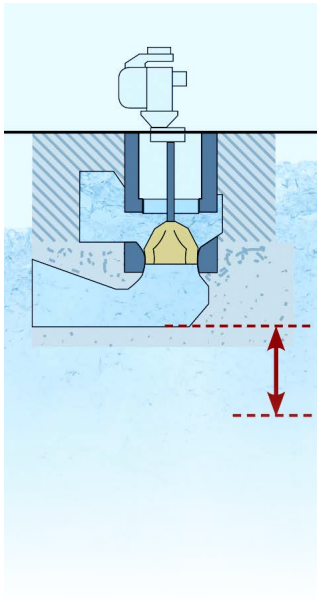
Benefits to convince you

Every pump type has its justification and its advantages for applications with specific requirements. Due to the resulting installation conditions (small difference in head between inlet and outlet), concrete volute pumps are especially beneficial for applications with high discharges (5-50 m³/s) and low heads. Normally, vertical line shaft pumps are used for this type of application.

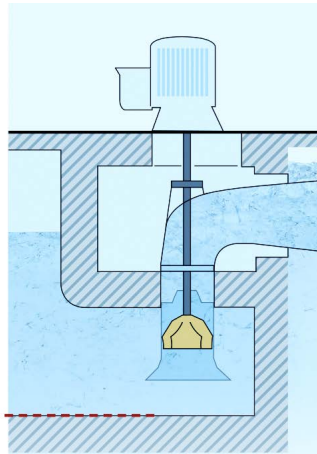
REDUCED INVESTMENT COSTS

Compared to the conventional design of vertical line-shaft pumps, concrete volute pumps also have an inlet bend, which guides the water optimally to the impeller. Another essential difference is the much shorter distance between the center line of the impeller and the discharge pipe. This results in a very compact design, less construction depth being required, and reduced construction costs. In comparison, the vertical line shaft pump can be up to twice as heavy.

Concrete volute pump

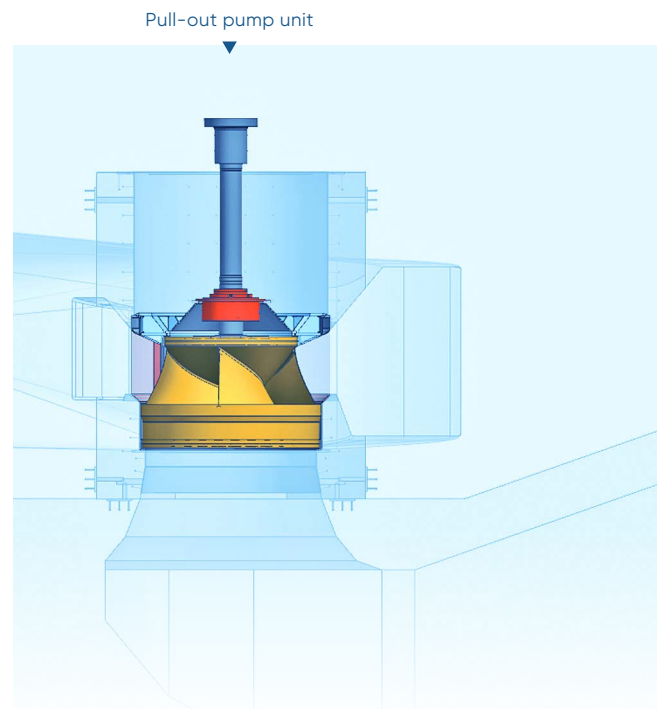


Vertical line shaft pump



EASY MAINTENANCE

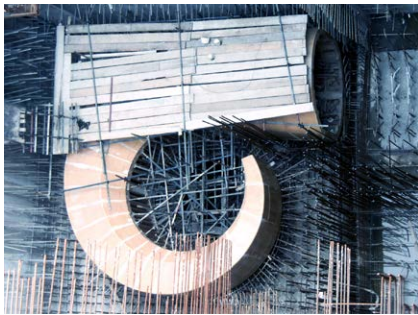
The concrete volute pump basically consists of the concrete casing and the pull-out pump unit (rotating parts of the pump). The pull-out unit can be lifted out easily for maintenance purposes. The concrete surface is resistant to any kind of water and requires no maintenance. The fewer parts there are, the less maintenance is required.



Three construction procedures for concrete volute pumps

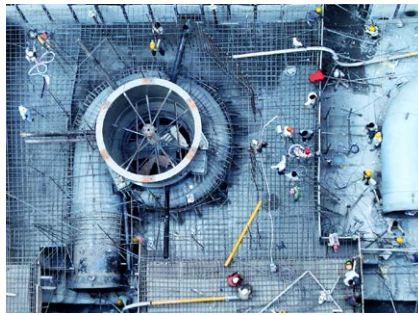
IN-SITU CASTING

Wooden formwork is positioned at site and the surrounding concrete is cast in two stages. The formwork can be reused several times and is easy to lift as well as position. For large sizes, the investment costs are relatively low in comparison to other solutions. The concrete surface is resistant to brackish water or seawater.



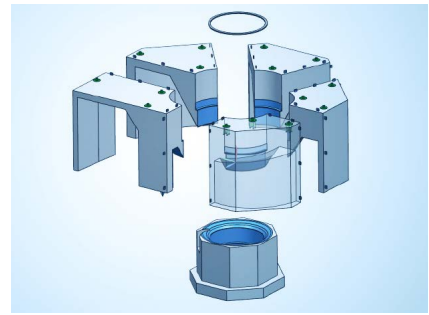
STEEL LINER

The steel liner of the volute is used as permanent formwork. Depending on the size of the volute, the liner parts can be welded at site. This option is an advantage with small pumps in small numbers. For seawater applications, this type of volute liner is expensive because it must be made of stainless steel or have expensive coating.



PREFABRICATED ELEMENTS

The pump volute is split into a certain number of concrete blocks, which are cast in a concrete factory. The parts are then shipped to site and assembled. The advantage is that the civil work at site need not be particularly accurate. The volute surface is resistant to brackish water or seawater.



	IN-SITU CASTING	STEEL LINER	PREFABRICATED ELEMENTS
Large size of pump (D1* > 2 m)	+++ Wooden formwork costs are low	++ A lot of steel required which is relative expensive	+ Many heavy concrete blocks difficult to transport and position
Medium size of pump (1.6 m < D1 < 2 m)	++ Wooden formwork costs are low	++ Steel costs get less expensive in relation	+ Difficult positioning of heavy concrete blocks
Small size of pump (D1 < 1.6 m)	+ Pulling out of formwork after concreting starts to get difficult	+++ Steel volute can be easily manufactured	++ Small concrete blocks are easy to position and adjust at site
Small number of equal pumps (n ≤ 3)	++ Formwork costs are low, reusal of formwork makes no sense	+++ Price difference between steel and wood is not relevant	+ High effort for small number of pumps (high capacity of mobile crane)
Large number of equal pumps (n > 3)	+++ Formwork can be reused several times	+ Big price difference between steel and wood	++ Required efforts are feasible
Sea or brackish Water	+++ Concrete surface is resistant and not corroding	+ Expensive coatings or stainless steel liners are required	+++ Concrete surface is resistant and not corroding
Delivery time and trans-port of formworks/liners/blocks to site	+++ Production time of formworks is fast; Easy positioning of formworks at site	++ Production time of liners is fast, welding of liner parts at site	+ Production of elements takes plus ≈1 month, high efforts for concrete blocks positioning
Concreting at site	+ Careful pouring of concrete	++ Careful pouring of concrete	+++ No very accurate civil work necessary at site

* D1 = impeller inlet Ø

The evaluation matrix above is simplified. The decision on which construction procedure to choose shall be done case by case and include various individual requirements. ANDRITZ HYDRO is looking forward to supporting you in finding the best solution for your project.

Greater efficiency for a competitive edge - Pumps service

Optimization / Modernization / Operating reliability

The conditions of your plant have changed, but your pumps are still operating as previously and therefore, wasting energy? Would you like to optimize your system to reduce costs? With ANDRITZ, you will have a competent partner for these and numerous other services at your side.

Service and maintenance have a long tradition at ANDRITZ and complement the product portfolio. The century-long expertise is reflected not only in a service portfolio with innovative solutions and advanced products that can be optimally adapted to the respective customer needs, but also in a specially trained staff. ANDRITZ has specialized in the servicing of pumps to achieve improved efficiencies and adaptations to changed operating points of the installed pumps. A large potential for savings can already be achieved by improving the efficiency of 20 percent of the installed pumps. Our service team provides prompt, professional, and reliable assistance – also for other manufacturers' products. Book our service package and you can be sure of the best operating reliability for your systems in the long term. We conduct an expert assessment together with you, thus creating transparency and making an op-

timum solution possible that is tailored to your needs. After examining your plant, we determine its savings potential and realize it by improving the efficiency of the pumps installed. Additionally, this individual solution lowers your maintenance costs. You do not have to think about personnel, nor about maintenance schedules or utilities. Assembly is conducted according to defined schedules and with assistance from our trained personnel.

AN OVERVIEW OF OUR SERVICES

- Supply of original spare parts
- Deployment of trained personnel
- Installation and start-up
- Inspection
- Repairs, overhauls, maintenance
- Machine assessment by an expert for early fault detection
- Consulting and modernization
- Performance and vibration measurement
- Fault and damage analyses
- Feasibility studies
- Energy consulting for pumps and systems
- Preparation of maintenance schedules
- Service and maintenance agreements
- Automation and Electrical Power Systems
- Electronic equipment
- Training



Find out more about
ANDRITZ pumps service



Always a flow ahead - Research and development

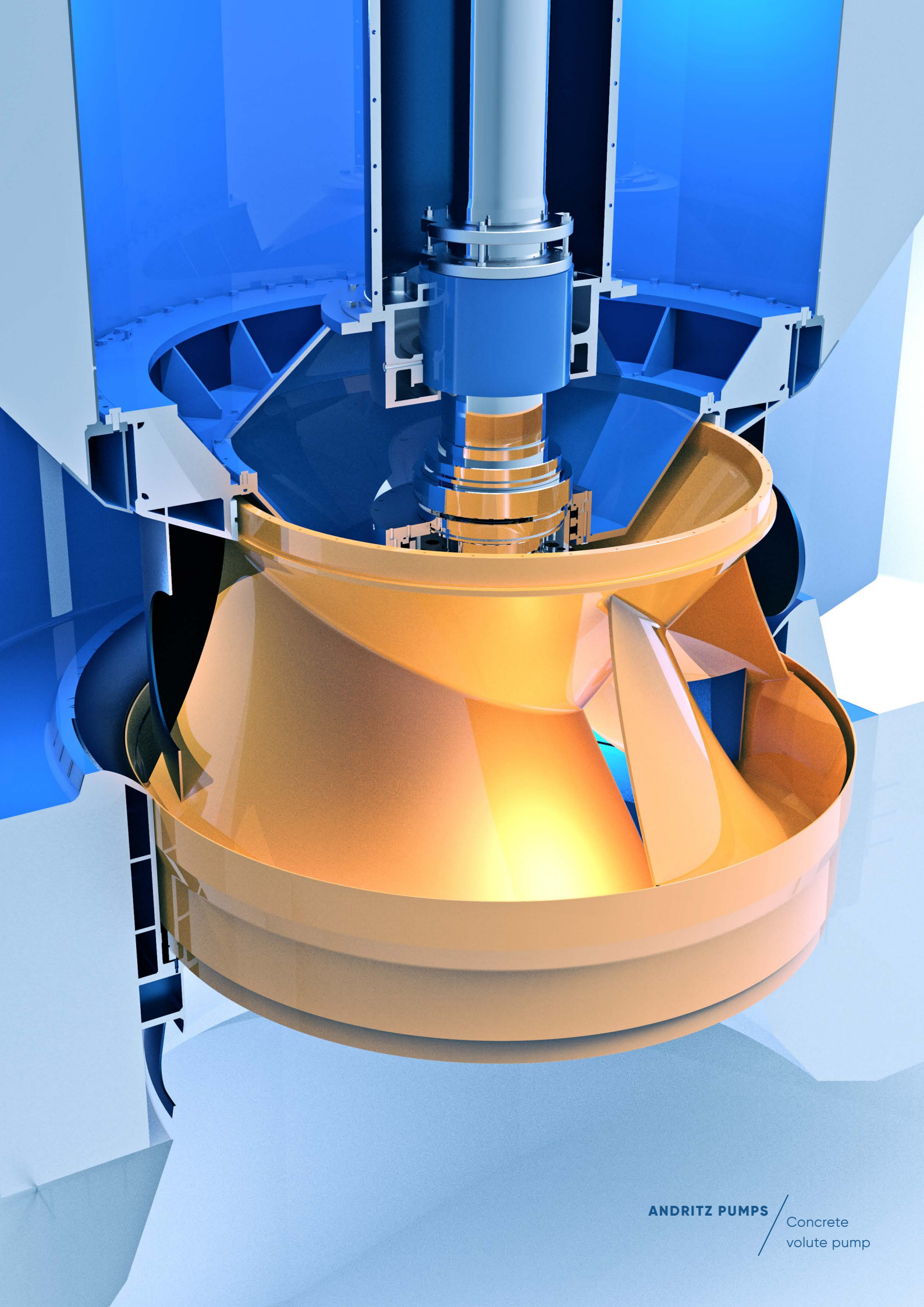
Our affiliate ASTROE enjoys an internationally renowned reputation for its hydraulic developments and investigations. The high efficiency of the ANDRITZ pump series is ensured by Computational Fluid Dynamic (CFD) calculations and extensive testing carried out in our company owned laboratory.

Continuously increasing demands by customers in our operating industries emphasize the significance of R&D in the constant optimization of products and services. Today, efficiency, flexibility, and reliability over an extended lifetime are the major challenges of the market.

Our commitment to research and development forms the basis for our advances in hydraulic machine manufacturing. With ASTROE, center for hydraulic engineering and laboratory, we have an internationally renowned institute for hydraulic development work at our disposal. We are currently developing and testing our pumps and

turbines at five locations in Austria, Germany, Switzerland, and China. Our test stands are among the most accurate in the world. By networking these research and development centers, we provide a continuous transfer of know-how within the ANDRITZ GROUP for the benefit of our customers. The main tools for R&D are numerical simulation methods as well as experimental measurements in the laboratory and on site. State-of-the-art equipment, highly precise measuring instruments as well as the latest simulation technologies, and powerful software form the basis of the high technical quality of the pumps and turbines from ANDRITZ.





ANDRITZ PUMPS

Concrete
volute pump



INNOVATION SINCE 1852

The internationally renowned ANDRITZ GROUP has been building pumps for more than 165 years. We offer innovative and targeted solutions with pumps and complete pumping stations. Our longstanding experience in hydraulic machine manufacturing and complete process know-how form the basis of the high standard of ANDRITZ pump engineering. Our quality and high-efficiency products as well as our understanding of customer requirements have made us a preferred partner for pumping solutions worldwide. ANDRITZ offers everything from a single source – from development work, model tests, engineering design, manufacture and project management, to after-sales service and training. We also perform complete start-up on site and guarantee our customers the best support. Our declared goal is your complete satisfaction. See for yourself!

EUROPE

ANDRITZ AG
Stattegger Strasse 18
8045 Graz, Austria
p: +43 316 6902-2509
f: +43 316 6902-413
pumps@andritz.com

ANDRITZ Ritz GmbH
Güglingstraße 50
73529 Schwäbisch Gmünd,
Germany
p: +49 7171 609-0
f: +49 7171 609-287
ritz@andritz.com

ANDRITZ Hydro S.L.
Polígono Industrial La Garza 2
Carretera de Algete M-106, Km. 2
28110 Algete
Spain
p: +34 91 6636 409
f: +34 91 425 1001
bombas.es@andritz.com

SOUTH AMERICA

ANDRITZ HYDRO S.A.
Av. Juruá 747, Alphaville Industrial
06455-010, Barueri, SP - Brasil
p: +55 11 4133-0000
f: +55 11 4133-0037
bombas-brazil@andritz.com

ASIA

ANDRITZ (CHINA) LTD.
No.83 B Zone, Leping Central Techno-
logy & Industry Park, Sanshui District,
Foshan 528137, Guangdong, P.R.China
p: +86 0757 6663-3102
atc_pumps@andritz.com

ANDRITZ Separation & Pump
Technologies India Pvt. Ltd.
S.No. 389, 400/2A & 400/2C,
Padur Road, Kuthambakkam
Village, Poonamallee Talluk,
Thiruvallur District –
600124, Chennai, India
p: +91 44 4399-1111
pump.in@andritz.com

ANDRITZ FZCO

Dubai Airport Free Zone (DAFZA)
Building 6WB – Office No. 642
Dubai, United Arab Emirates
p: +971 4 214 6546
dubai@andritz.com

ANDRITZ.COM/PUMPS

ANDRITZ

All data, information, statements, photographs and graphic illustrations in this leaflet are without any obligation and raise no liabilities to or form part of any sales contracts of ANDRITZ AG or any affiliates for equipment and/or systems referred to herein. © ANDRITZ AG 2020. All rights reserved. No part of this copyrighted work may be reproduced, modified or distributed in any form or by any means, or stored in any database or retrieval system, without the prior written permission of ANDRITZ AG or its affiliates. Any such unauthorized use for any purpose is a violation of the relevant copyright laws. ANDRITZ AG, Stattegger Strasse 18, 8045 Graz, Austria.

